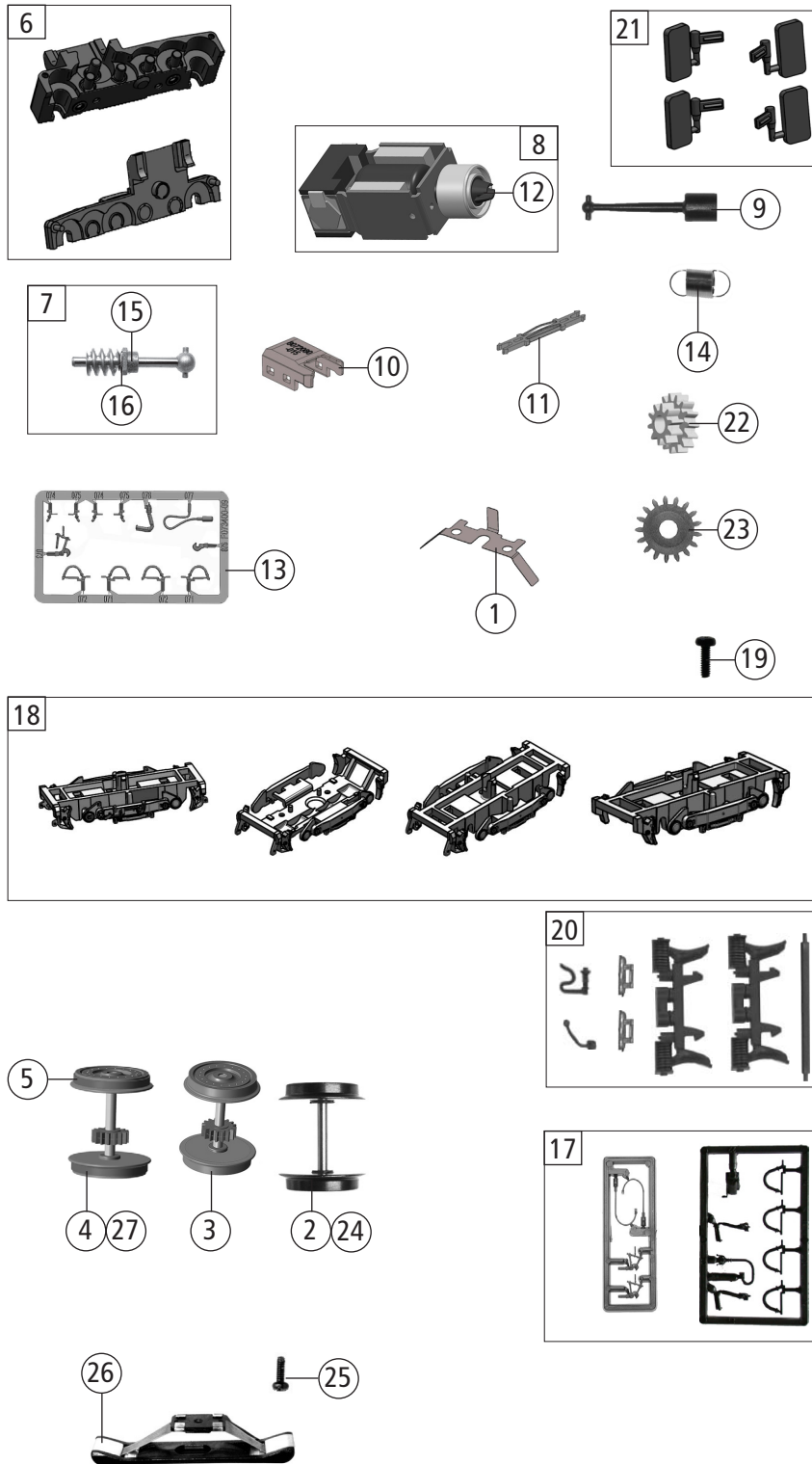


Pos. Nr. Pos.no.	Beschreibung Description	Art.-Nr. Art.no.	Preisgruppe Price bracket
72082	DB BR 515	=	
72083		=	🔊
78083		~	🔊
1	Gehäuse MW kpl. 515 520-5 Body assy. for motor coach complete	144244	37
2	Gehäuse SW kpl. 815 687-9 Body assy. for control cab car	144259	37
3	Platine MW m.LED Motor coach PCB with LED	143532	26
4	TS - Abdeckungen, Kinematik Part set - covers,kinematics	144195	7
5	TS - Kupplung Part set - coupling	144239	7
6	Heizleitungen + WC-Rohr Heat pipes + plumbing	144240	6
7	TS - Dachlüfter Part set roof vents	144245	6
8	TS - Stirnfenster Part set - front window	143542	14
9	TS - Seitenfenster Part set - side window	144246	25
10	Puffer links Buffer left	143544	3
11	Puffer rechts Buffer right	143545	3
12	TS - Gehäuse Part set - body	143546	6
13	Scheibenwischer Wipers	143547	6
14	TS - Lichtnägeln Part set - light pin	143548	6
15	Zugfunkantenne lang Radio antenna long	143669	3
16	Platine SW m.LED Control cab car PCB with LED	143550	24
17	Bodenplatte SW Control cab car floor plate	144248	10
18	Inneneinrichtung SW Interior fittings for control cab car	144249	8
19	Brückenstecker TVS PLUX-16 Jumper	133241	10
20	Bodenplatte MW Motor coach floor plate	144237	19
21	Inneneinrichtung MW Interior fittings for motor coach	144242	7
22	SK-Schraube M1,6x4 mm SK - Screw	115161	3
23	SK-Schraube M2x5 mm SK - Screw	115205	3
24	Schraube M1,5x5 mm Screw	108137	3
25	Platine oben Upper PCB	144241	18
26	TS - Sitze MW + SW Part set - Seats	144243	19
27	E-Lokführer Loco driver	110407	6
28	Decoderdeckel Decoder cover	144238	13
Sound			
29	Platine MW m.LED Motor coach PCB with LED	143554	26
30	Sounddecoder Sound decoder	129000	39
31	Lautsprecher Loud speaker	129524	14
32	Platine SW m.LED Control cab car PCB with LED	143555	24
33	Decoder SW Decoder	143556	32

Änderungen in Konstruktion und Ausführung vorbehalten
We reserve the right to change the construction and specification



Pos. Nr. Pos.no.	Beschreibung Description	Art.-Nr. Art.no.	Preisgruppe Price bracket
72082	DB BR 515	=	
72083		=	🔊
78083		~	🔊
1	Radkontakt Contact	143525	6
2	Radsatz o. Zahnrad o. Haftring Wheelset w/o gearwh. w/o traction tyres	143526	10
3	Radsatz m. Zahnrad o. Haftring Wheelset w. gearwh. w/o traction tyres	143527	11
4	Radsatz m. Zahnrad m. 2 Haftringen Wheelset w. gearwh. w. 2 traction tyres	143528	12
5	Haftringen Traction tyres	143529	10
6	Getriebesatz 2tlg. Gear set 2 parts	144194	11
7	Schneckensatz Worm gear set	143531	11
8	Motor m. Schwungm. + Kardansch. Motor with flywheel + cardan reception	141276	28
9	Kardanwelle Cardan shaft	87172	4
10	Schneckendeckel Worm gear cover	143535	4
11	Kupplung Coupling	144247	4
12	Kardanschale Cardan reception	123385	4
13	TS - Bremsschläuche + Zughaken Part set of brake tubes & coupling hooks	139832	7
14	Zugfeder Draw spring	86208	3
15	Lager f. Schneckenachse Bearing for worm gear axle	89749	6
16	Anlaufscheibe Washer	114622	3
17	Zubehörrahmensatz Set of accessory frames	108322	7
18	TS - Laufgestell Part set - bogie	144191	8
19	GF-Schraube M1,6x4 mm GF - Schraube	114850	3
20	TS - Blendensteckteile Part set - blinds plug-in parts	144193	11
21	TS - Spiegel Part set - Mirrors	144261	7
22	Schnecken Zahnrad Wormgear	86410	4
23	Zahnrad Gear wheel	111115	3
AC - Wechselstrom			
24	Radsatz o. Zahnrad o. Haftring Wheelset w/o gearwh. w/o traction tyres	143557	10
25	Schraube M1,5x5 mm Screw	108137	3
26	Schleifer Slider	86030	14
27	Radsatz m. Zahnrad m. 2 Haftringen Wheelset w. gearwh. w. 2 traction tyres	143558	12